



# Anthropology 2290 The Human Skeleton Fall 2018



T/R 11- 12:15 pm SO 4080

**Instructor:** Alice F. Gooding, PhD  
afazloll@kennesaw.edu

Office Hours: By appointment (email me to set something up)  
Office: Social Science Building, Skeleton Variation Lab 3002

**Required Text:** *The Human Bone Manual* (2005), by Tim White and Pieter Folkens, Academic Press, 1<sup>st</sup> Edition. ISBN: 9780120884674

**Recommended Text:** *An Illustrated Atlas of the Skeletal Muscles* (2010), by Bradley S. Bowden and Joan M. Bowden, Morton Publish Company. ISBN: 9781617311727

## Introduction

This course explores human osteology, or the study of the human skeletal system. We will cover bone biology, anatomical terminology, bony landmarks, and bone variation to examine how anthropologists use the skeleton in forensic, genetic, and bioarchaeological contexts.

## Course Objectives

Students will gain an understanding of the complexity of the human skeleton, and how the micro and macro anatomy of bones is used in anthropological study. Specifically, you will:

1. Identify the bones and anatomical features of the human skeleton.
2. Explain how bone size and shape vary between individuals and populations.
3. Describe the applications of skeletal morphology in anthropology.

There are no prerequisites for ANTH 2290. This is a 3 credit hour course. It is lecture and memorization intensive and moves at a fast pace. You are required to come to class prepared with the textbook and term lists, and to participate in exercises and lab activities.

## Evaluation and Grading

Evaluation of student performance is based on three exams and three quizzes. These assignments are weighted as follows:

|                    |          |                        |                    |
|--------------------|----------|------------------------|--------------------|
| <b>Exams</b>       | <b>2</b> | <b>100 points each</b> | <b>= 200 total</b> |
| <b>Lab Quizzes</b> | <b>3</b> | <b>50 points each</b>  | <b>= 150 total</b> |
| <b>Final Exam</b>  | <b>1</b> | <b>150 points</b>      | <b>= 150 total</b> |
|                    |          |                        | <b>= 500 total</b> |

Grades will be based on total points earned.

Points will not be rounded up.

Total points of less than 300 will result in a failing grade.

**A 450-500 points**

**B 400-449**

**C 350-399**

**D 300-349**

## Attendance Policy

Students are solely responsible for managing their enrollment status in the course; nonattendance does not constitute a withdrawal. Although daily attendance is not graded, being in class is crucial to a successful performance. Memorization of the skeleton and its features requires extensive hands-on time with the bones. I do not allow lectures to be recorded.

Please feel free to share your opinions of the material being discussed and view this class as a safe environment to discuss many controversial issues. Perspectives presented in this course are not meant to change your personal views or beliefs; however, you are expected to understand the anthropological principles and explanations set forth in class.

## Communication

Class materials including term lists and exam study materials will be posted on D2L (<https://kennesaw.view.usg.edu/>). **Check D2L and your KSU email often.** This will be the instructor's primary way to communicate with students. Please use your KSU email (not a personal email or the D2L email system) to communicate with the professor.

## Study Tips

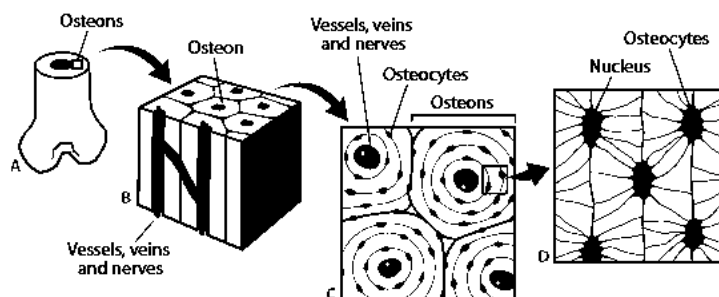
This course requires heavy memorization. The only recommended way to learn the material is to use the hands-on lab time during class. There is no substitute on the internet or in a book that can match the value of handling the actual bones. **Make the most out of study time by bringing your textbook and term lists to every class period.** There will be no outside-of-class study periods or additional material made available. The library does have a set of bones that can be checked out for studying. Be aware that these bones are not high quality and do not show the level of detail for which you are responsible. Always feel free to reach out to the instructor if you need help with strategies for studying.

## Exams

There will be three exams, two worth 100 points each and a final exam worth 150 points. The first two tests are not cumulative- they cover only the material since the previous test. The final exam, however, covers material from the entire course. Exams in this course are comprised of a timed practical component and a written portion. If you arrive late for a test, you will not be given extra time to complete it. For emergency cases only, students may take a make-up exam, but arrangements must be made with the professor at least 48 hours before the original exam date. All make-up exams will be given during the week of November 13th- no exceptions. **Make-up exams are cumulative. Failure to take a make-up exam at the specified time will result in a grade of zero for the test.**

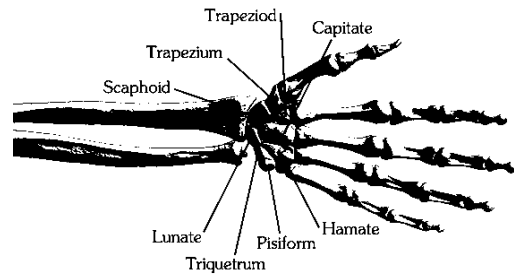
## Lab Quizzes

There will be three lab quizzes during the semester, each is worth 50 points. The goal of the quizzes is to prepare you for the exams. They are formatted as a timed practical. If you arrive late for a quiz, you will not be given additional time to complete it. **Missed quizzes cannot be made up**, resulting in a loss of 50 points for each.



## Suggestions for Success and University Resources

- Attend class, be prepared and alert.
- Study continuously, rather than cram for a test.
- Seek assistance from the instructor.



## Academic Honesty

Kennesaw State University students accept the pledge below by virtue of their acceptance into the institution and enrollment in courses. The declaration of principles and obligations within this pledge form the core mission statement of the Code of Academic Integrity. All subsequent prohibitions and rules of the Kennesaw State University Code of Academic Integrity concretely apply the precepts of this pledge by delineating behaviors that constitute academic misconduct. Should the investigation and/or resolution of alleged academic misconduct reveal that the actual misconduct which occurred is different than the initial allegations (e.g. alleged plagiarism which turns out to have been cheating), the final charge(s) will be modified accordingly. Ultimately, all possible forms of academic misconduct are simply variations upon the common problem of breaching university academic integrity standards. Assignments submitted toward completion of a course are subject to academic misconduct policies, even if the assignments in question do not receive individual grades (like early drafts of papers) or are not required (such as work submitted for extra credit).

Because academic misconduct directly opposes the central academic mission of Kennesaw State University, all such offenses are considered extremely serious. Accordingly, the minimum penalty for such a breach is a one-semester suspension from the university unless the student persuades the deciding body or hearing officer that the circumstances of his or her behavior substantially mitigate the gravity of the violation. If the incident constitutes the student's first academic misconduct offense and the student takes responsibility for the misconduct, the professor and student may agree to an informal resolution and academic sanction(s) in lieu of a formal hearing (and attendant risk of suspension). However, even in such cases, the professor may still pursue formal adjudication if he or she deems the alleged violation is of such an egregious nature as to warrant seeking suspension.

You can find more information on **KSU Codes of Conduct** at <http://scai.kennesaw.edu/codes.php>.

**Confidentiality/ Privacy Statement (FERPA)** at <http://enrollmentservices.kennesaw.edu/training/ferpa.php>.

**University- Student Rights Statement** at <http://catalog.kennesaw.edu/content.php?catoid=37&navoid=2962>.

**Ethics Statement** at <http://scai.kennesaw.edu/codes.php>.

## KSU Writing Center

The KSU Writing Center is a free service. Experienced, friendly writing assistants work with you on thesis development, organization, research documentation, grammar, mechanics, and more. They can help you improve your paper and teach you strategies to become a better writer on your own. For more information or to make an appointment visit <http://www.kennesaw.edu/english/WritingCenter>, or stop by Room 242 in the English Building.

## Academic Advising

The College of Humanities and Social Sciences offers academic advising to students in the Undergraduate Advising Center (UAC). The UAC is located in Pilcher, room 129. Make an appointment at <http://www.kennesaw.edu/hssadvising/appointments.php>.

## Military and Veterans Services

KSU has been recognized as a Military Friendly School. The KSU Military and Veterans Services Center helps veterans make the transition from their past military lifestyle to a university lifestyle. They will advise and guide you through all the military and academic paperwork and supply you with links to local military support services and contacts for local VA facilities. For more information, go to the website ([http://www.kennesaw.edu/studentsuccessservices/veterans\\_resources/](http://www.kennesaw.edu/studentsuccessservices/veterans_resources/)) or stop by room 200 in Willingham Hall.

## Safe Space and Sexual Assault Resources

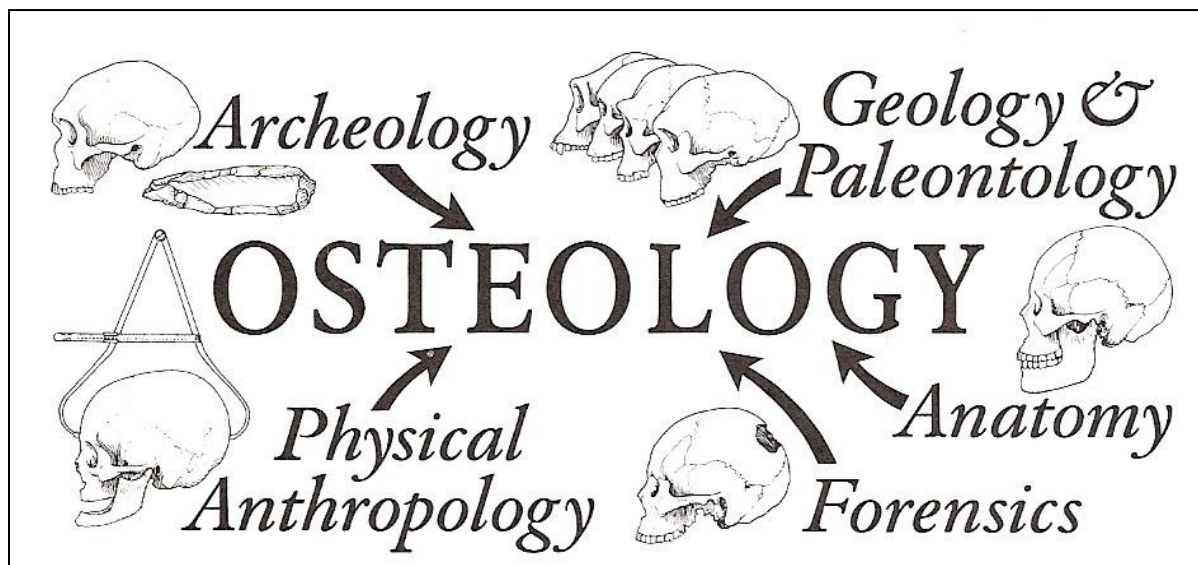
Title IX makes it clear that violence and harassment based on sex and gender are Civil Rights offenses subject to the same kinds of accountability and the same kinds of support applied to offenses against other protected categories such as race, national origin, etc. If you or someone you know has been harassed or assaulted, you can find the appropriate resources at the KSU Women's Resource and Violence Prevention Center (<http://www.kennesaw.edu/studentsuccessservices/wrc/>). If you are looking for resources related to gender identity, gender expression, or sexual orientation, please visit the KSU GLBTIQ Resource Center ([http://www.kennesaw.edu/stu\\_dev/glbtiq/](http://www.kennesaw.edu/stu_dev/glbtiq/)). The instructor of this course has received Safe Space training and is an advocate for student success.

You can find more information on **KSU Sexual Harassment Statement** at <http://scai.kennesaw.edu/codes.php>.

## Disabilities

Students who have a disability that requires accommodation(s) should make an appointment with the Office of Disability Services (470-578-2666) to discuss their specific needs. Any student needing to arrange an accommodation for a documented disability should contact the instructor during the first week of class.

You can find more information on the **ADA Statement** at <http://sds.kennesaw.edu/guidelines/institutional-policies.php>.



# Course Calendar

Due dates and topics are subject to change throughout the semester.

| Week                              | Class Period | Book Ch | Topics and Due Dates                                   | Theme Area                       |
|-----------------------------------|--------------|---------|--|----------------------------------|
| 1                                 | Aug 14       | 1       | Class Introduction                                     | <b>Introduction</b>              |
|                                   | Aug 16       |         | Osteology and Biological Anthropology                  |                                  |
| 2                                 | Aug 21       | 6       | Bone Basics and Anatomical Terminology                 | <b>Bone Basics</b>               |
|                                   | Aug 23       | 4       | Bone Biology   |                                  |
| 3                                 | Aug 28       |         | Bone Biology   |                                  |
|                                   | Aug 30       |         | <b>Exam 1</b>  |                                  |
| 4                                 | Sept 4       | 7       | The Skull  | <b>The Axial Skeleton</b>        |
|                                   | Sept 6       |         | The Skull  |                                  |
| 5                                 | Sept 11      |         | The Skull  |                                  |
|                                   | Sept 13      |         | The Skull  |                                  |
| 6                                 | Sept 18-20   |         | <b>NO CLASS- Study for the quiz!</b>                   |                                  |
| 7                                 | Sept 25      |         | <b>Quiz 1</b> (covers the skull)                       |                                  |
|                                   | Sept 27      | 8       | Dentition  |                                  |
| 8                                 | Oct 2        | 9       | Vertebrae  |                                  |
|                                   | Oct 4        | 10      | Sternum, and Ribs                                      |                                  |
| 9                                 | Oct 9-11     |         | <b>NO CLASS- Study for the exam!</b>                   |                                  |
| 10                                | Oct 16       |         | Catch-up day   |                                  |
|                                   | Oct 18       |         | <b>Exam 2</b>  |                                  |
| 11                                | Oct 23       | 11      | Shoulder Girdle  | <b>The Appendicular Skeleton</b> |
|                                   | Oct 25       | 12      | Upper Limb Bones                                       |                                  |
| 12                                | Oct 30       | 13      | Hands  |                                  |
|                                   | Nov 1        |         | Catch-up day   |                                  |
| 13                                | Nov 6        |         | <b>Quiz 2</b> (covers shoulder girdle and upper limbs) |                                  |
|                                   | Nov 8        | 14      | Pelvic Girdle  |                                  |
| 14                                | Nov 13       | 15      | Lower Limb Bones                                       |                                  |
|                                   | Nov 15       | 16      | Feet   |                                  |
| 15                                | Nov 19-23    |         | <b>NO CLASS- Thanksgiving and Fall Break</b>           |                                  |
| 16                                | Nov 27       |         | Catch-up day   |                                  |
|                                   | Nov 29       |         | <b>Quiz 3</b> (covers pelvic girdle and lower limbs)   |                                  |
| <b>December 6, 10:30-12:30 pm</b> |              |         | <b>Final Exam</b>                                      |                                  |