



Anthropology 3320 Lab in Physical Anthropology Fall 2018



T/R 9:30-10:45 am

SO 4080

Instructor: Alice F. Gooding, PhD
afazloll@kennesaw.edu

Office Hours: By appointment (email me to set something up)
Office: Social Science Building, Skeleton Variation Lab 3002

Required Readings: All readings for this course will be posted on D2L.

Introduction

This course explores the discipline of physical (biological) anthropology through intensive reading and lab-based research. We will cover current topics of study in some of the major subfields- human biology, primate evolution, osteology, paleoanthropology, and bioarchaeology.

Course Objectives

Students will gain an understanding of the study of morphological variation in the past and present, especially as it relates to functional, behavioral, and cultural contexts. Specifically, you will:

1. Use evolutionary theory and concepts to consider topics in biological anthropology.
2. Perform lab-based research and analysis.
3. Integrate knowledge of course concepts through self-guided research and scientific writing.

The prerequisite for ANTH 3320 is ANTH 3301. This course is reading and writing intensive and moves at a fast pace. You are required to come to class prepared to participate in discussions and exercises.

Evaluation and Grading

Evaluation of student performance is based on five laboratory write-ups. These assignments are weighted as follows:

Human Variation Lab	50 points
Primate Lab	75 points
Biomechanics Lab	100 points
Gait Lab	125 points
Bioarchaeology Lab	150 points
	= 500 total

Grades will be based on total points earned.
Points will not be rounded up.

Total points of less than 300 will result in a failing grade.

A	450-500 points
B	400-449
C	350-399
D	300-349

Attendance Policy

Students are solely responsible for managing their enrollment status in the course; nonattendance does not constitute a withdrawal. Although daily attendance is not graded, being in class is crucial to a successful performance. I do not allow lectures to be recorded.

Please feel free to share your opinions of the material being discussed and view this class as a safe environment to discuss many controversial issues. Perspectives presented in this course are not meant to change your personal views or beliefs; however, you are expected to understand the anthropological principles and explanations set forth in class.

Communication

Class materials including term lists and exam study materials will be posted on D2L (<https://kennesaw.view.usg.edu/>). **Check D2L and your KSU email often.** This will be the instructor's primary way to communicate with students. Please use your KSU email (not a personal email or the D2L email system) to communicate with the professor.

Readings

This course is reading and writing intensive. Most readings are scientific articles from academic, peer-reviewed journals in physical anthropology. Read each selection carefully, make notes, and come to class prepared to discuss your thoughts with the class. It is very important to keep up with the readings, as these materials will be used to support your lab write-ups. A guideline for reading scientific articles is posted on D2L.

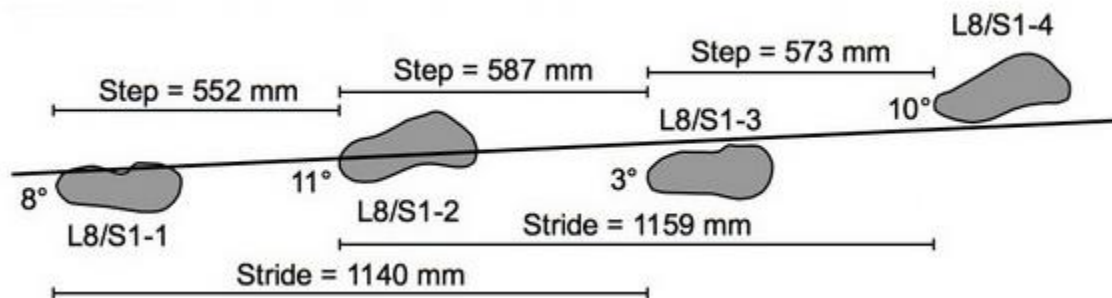
Lab Research

Each unit of study ends in a lab (5 total). The format of the labs will vary, including hands-on demonstrations, independent data collection, and group-based project development. Students are responsible for attending class and participating in all lab research. Non-attendance may result in the inability to complete the lab write-up.

Lab Write-Ups

The culmination of each unit will be a lab write-up in which you will demonstrate your knowledge of the relevant readings, understanding of the lab, and analysis of the results. Each write-up is designed to advance your skills in scientific writing and will progress in length and depth as the semester goes on. The lab write-ups progress in length (and point value) until a complete scientific paper is achieved. A scientific paper includes the following sections: introduction, background, materials and methods, results, discussion, and conclusions.

Use the grading guidelines on D2L and feedback from the instructor to complete each paper. Your writing mechanics, style, and level of analysis are expected to improve as the semester goes on. All write-ups must be individually written; no group work is permitted. Papers are due in two formats- one copy submitted to the D2L dropbox and one hard copy submitted to the instructor at the start of class that day. **Late write-ups will receive 5 points off for each day late (including weekends).**



Suggestions for Success and University Resources

- Attend class, be prepared and alert.
- Study continuously, rather than cram for a test.
- Seek assistance from the instructor.

Academic Honesty

Kennesaw State University students accept the pledge below by virtue of their acceptance into the institution and enrollment in courses. The declaration of principles and obligations within this pledge form the core mission statement of the Code of Academic Integrity. All subsequent prohibitions and rules of the Kennesaw State University Code of Academic Integrity concretely apply the precepts of this pledge by delineating behaviors that constitute academic misconduct. Should the investigation and/or resolution of alleged academic misconduct reveal that the actual misconduct which occurred is different than the initial allegations (e.g. alleged plagiarism which turns out to have been cheating), the final charge(s) will be modified accordingly. Ultimately, all possible forms of academic misconduct are simply variations upon the common problem of breaching university academic integrity standards. Assignments submitted toward completion of a course are subject to academic misconduct policies, even if the assignments in question do not receive individual grades (like early drafts of papers) or are not required (such as work submitted for extra credit).

Because academic misconduct directly opposes the central academic mission of Kennesaw State University, all such offenses are considered extremely serious. Accordingly, the minimum penalty for such a breach is a one-semester suspension from the university unless the student persuades the deciding body or hearing officer that the circumstances of his or her behavior substantially mitigate the gravity of the violation. If the incident constitutes the student's first academic misconduct offense and the student takes responsibility for the misconduct, the professor and student may agree to an informal resolution and academic sanction(s) in lieu of a formal hearing (and attendant risk of suspension). However, even in such cases, the professor may still pursue formal adjudication if he or she deems the alleged violation is of such an egregious nature as to warrant seeking suspension.

You can find more information on **KSU Codes of Conduct** at <http://scai.kennesaw.edu/codes.php>.

Confidentiality/ Privacy Statement (FERPA) at <http://enrollmentservices.kennesaw.edu/training/ferpa.php>.

University- Student Rights Statement at <http://catalog.kennesaw.edu/content.php?catoid=37&navoid=2962>.

Ethics Statement at <http://scai.kennesaw.edu/codes.php>.

KSU Writing Center

The KSU Writing Center is a free service. Experienced, friendly writing assistants work with you on thesis development, organization, research documentation, grammar, mechanics, and more. They can help you improve your paper and teach you strategies to become a better writer on your own. For more information or to make an appointment visit <http://www.kennesaw.edu/english/WritingCenter>, or stop by Room 242 in the English Building.

Academic Advising

The College of Humanities and Social Sciences offers academic advising to students in the Undergraduate Advising Center (UAC). The UAC is located in Pilcher, room 129. Make an appointment at <http://www.kennesaw.edu/hssadvising/appointments.php>.

Military and Veterans Services

KSU has been recognized as a Military Friendly School. The KSU Military and Veterans Services Center helps veterans make the transition from their past military lifestyle to a university lifestyle. They will advise and guide you through all the military and academic paperwork and supply you with links to local military support services and contacts for local VA facilities. For more information, go to the website (http://www.kennesaw.edu/studentsuccessservices/veterans_resources/) or stop by room 200 in Willingham Hall.

Safe Space and Sexual Assault Resources

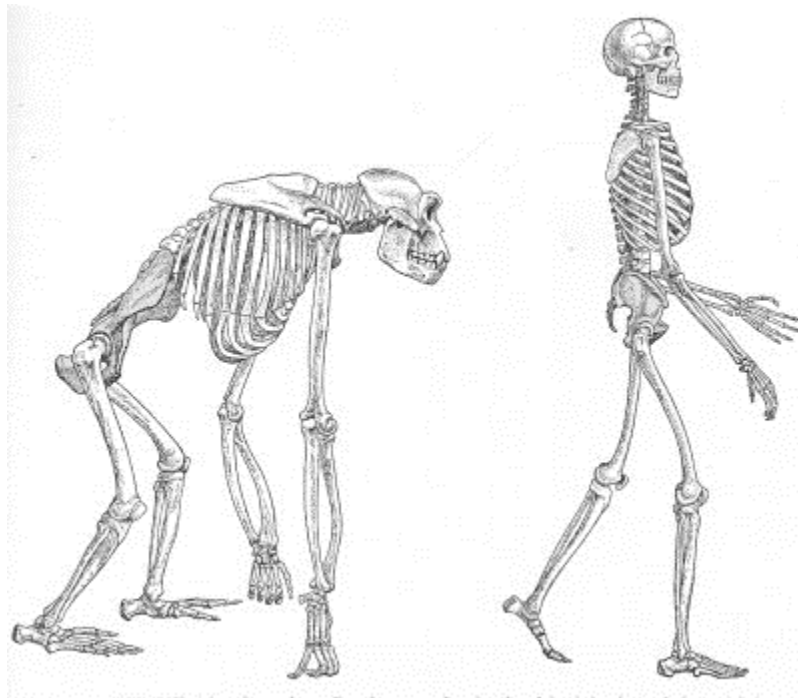
Title IX makes it clear that violence and harassment based on sex and gender are Civil Rights offenses subject to the same kinds of accountability and the same kinds of support applied to offenses against other protected categories such as race, national origin, etc. If you or someone you know has been harassed or assaulted, you can find the appropriate resources at the KSU Women's Resource and Violence Prevention Center (<http://www.kennesaw.edu/studentsuccessservices/wrc/>). If you are looking for resources related to gender identity, gender expression, or sexual orientation, please visit the KSU GLBTIQ Resource Center (http://www.kennesaw.edu/stu_dev/glbtiq/). The instructor of this course has received Safe Space training and is an advocate for student success.

You can find more information on **KSU Sexual Harassment Statement** at <http://scai.kennesaw.edu/codes.php>.

Disabilities

Students who have a disability that requires accommodation(s) should make an appointment with the Office of Disability Services (470-578-2666) to discuss their specific needs. Any student needing to arrange an accommodation for a documented disability should contact the instructor during the first week of class.

You can find more information on the **ADA Statement** at <http://sds.kennesaw.edu/guidelines/institutional-policies.php>.



Course Calendar

Due dates and topics are subject to change throughout the semester.

Week	Class Period	Reading	Topics and Due Dates	Theme Area
1	Aug 14		Class Introduction	Introduction
	Aug 16		Introduction to Scientific Writing	
2	Aug 21	1	Reading: Soluri and Agarwal (2016)	Human Biology and Variation
	Aug 23	2 and 3	Reading: Diamond (1991) and Glausiusz (1995)	
3	Aug 28		Human Variation Lab	
	Aug 30		Human Variation Lab	
4	Sept 4		Human Variation Lab Write-Up due	Primate Evolution and Primatology
	Sept 6	4	Reading: Larsen (2016)	
5	Sept 11	5 and 6	Reading: Balter (2008) and Keith-Lucas et al. (1999)	
	Sept 13		Primate Lab	
6	Sept 18-20		NO CLASS- Zoo Week for Primate Lab	
7	Sept 25		Primatology Lab Write-Up due	Osteology and Functional Morphology
	Sept 27	7	Reading: Ruff (2008)	
8	Oct 2	8	Reading: Sparacello et al. (2014)	
	Oct 4	9	Reading: Shaw and Stock (2009)	
9	Oct 9-11		NO CLASS- Write up lab	
10	Oct 16		Biomechanics Lab Write-Up due	Paleoanthropology
	Oct 18	10	Reading: Boulanger (2013)	
11	Oct 23	11	Reading: Bramble and Lieberman (2004)	
	Oct 25	12	Reading: Sellers et al. (2005)	
12	Oct 30		Gait Lab	
	Nov 1		Gait Lab	
13	Nov 6		Gait Lab Write-Up due	Bioarchaeology
	Nov 8	13	Reading: Larsen (2000)	
14	Nov 13	14	Reading: Weiss (2014)	
	Nov 15	15	Reading: Kirkpatrick Smith (1999)	
15	Nov 19-23		NO CLASS- Thanksgiving and Fall Break	
16	Nov 27		Bioarchaeology Lab	
	Nov 29		Bioarchaeology Lab	
December 6, 9:30 am			Bioarchaeology Lab Write-Up due	