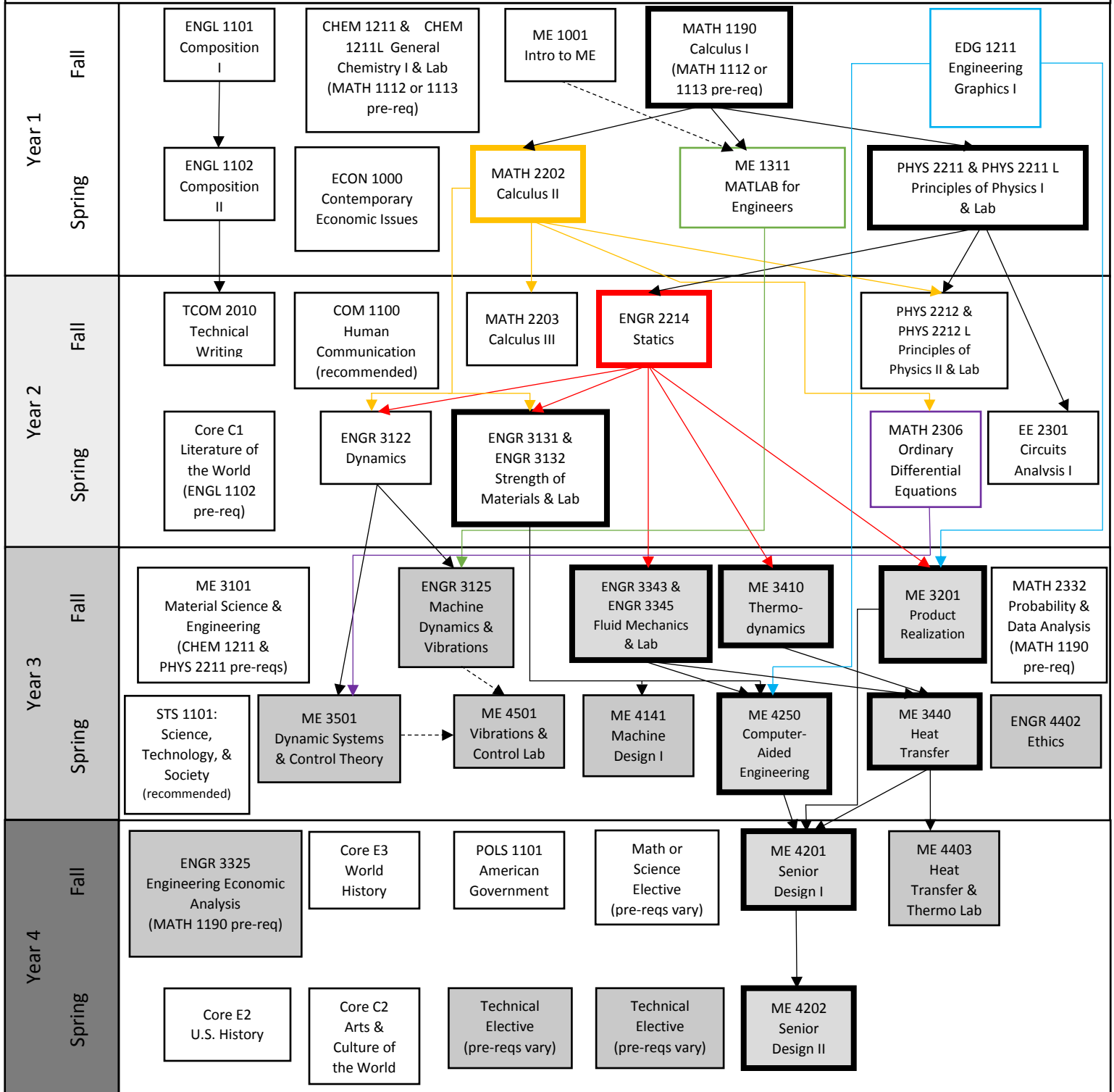


# B.S. Mechanical Engineering 2017 -2018 Flow Chart (updated 10/18/17)

**Disclaimer:** Although we have made every effort for this flow chart to be free of errors, it cannot be guaranteed correct for all students.  
**See DegreeWorks for official degree requirements.**



Pre-requisite



Can be taken concurrently



Critical Path



Requires Engineering Standing Fall 2014